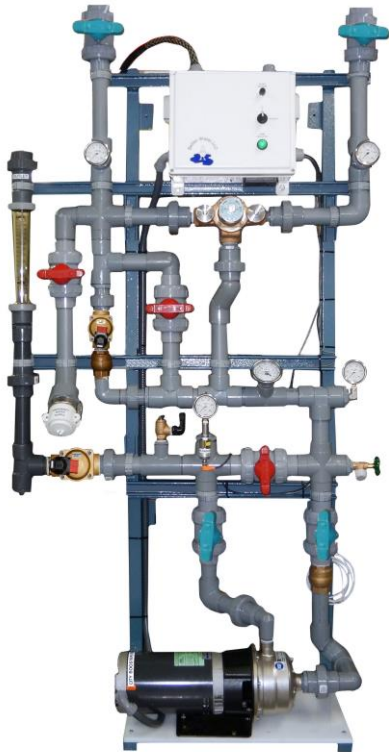




Pre-Treatment Overview



- Pre-treatment is one of the basic and crucial components in a water system. It starts with a blending valve and booster pump, and continues through many levels of filtration to feed the RO.
- The entire water system depends on proper water pre-treatment.
- Proper pre-treatment can lengthen the life of the RO membranes, improve the quality of water produced, and reduce the amount of maintenance and cleaning a system may require.
- Better Water LLC reviews the feed water analysis along with the clinical demands for RO water to determine the size and type of pre-treatment required to give your water system optimal performance.

Pre-Treatment Component Devices

- **Pretreatment Rack** with blend-valve, automatic blend-valve bypass VFD controlled city booster pump, flow-meter
- **1" Wall-Mounted Rack, 1" and 1 ½" Standard Rack**
- **Iron Media Filtration** – reduce heavy metals
- **Multi-Media Filtration, Hurricane Filter, Multi-Cartridge Filtration and Cartridge Filters** – reduce sediments
- **Water Softener** – reduce water hardness
- **Dealkalizer** – lower water pH
- **Organic Scavenger** – reduce organic material
- **Carbon Media Filtration** – reduce chlorine and chloramines
- **UV Light** – reduce bacteria





Better Water LLC

Wall-Mounted Pre-Treatment Rack, 1"



- Better Water LLC has the solution to all your pre-treatment needs.
- Pre-treatment racks include a blend-valve, city booster pump (*1 and 3 phase*), with all the necessary controls and safety features.
- The pre-treatment racks come assembled and ready for installation, greatly decreasing the time needed for the usual labor intensive installation of pre-treatment piping.
- Constructed of 1" CPVC piping, connected to uni-strut for simple mounting to the wall.

Standard Features

- CPVC Piping; 1"
- Simple, uni-strut, wall-mounted frame
- City Booster Pump
- Blend Valve
- Thermometer
- Full Set of Pressure Gauges
- Flow-Meter
- Water Leak Detector Probe and Alarm (*optional*)

rev. Apr 2023



Better Water LLC; 698 Swan Dr; Smyrna, TN 37167; Phone (615) 355-6063, Fax (615) 355-6065
Website www.betterwater.com



*Equipment changes are at the sole discretion of Better Water LLC.
Brochure photographs and specifications may not reflect recent changes.*

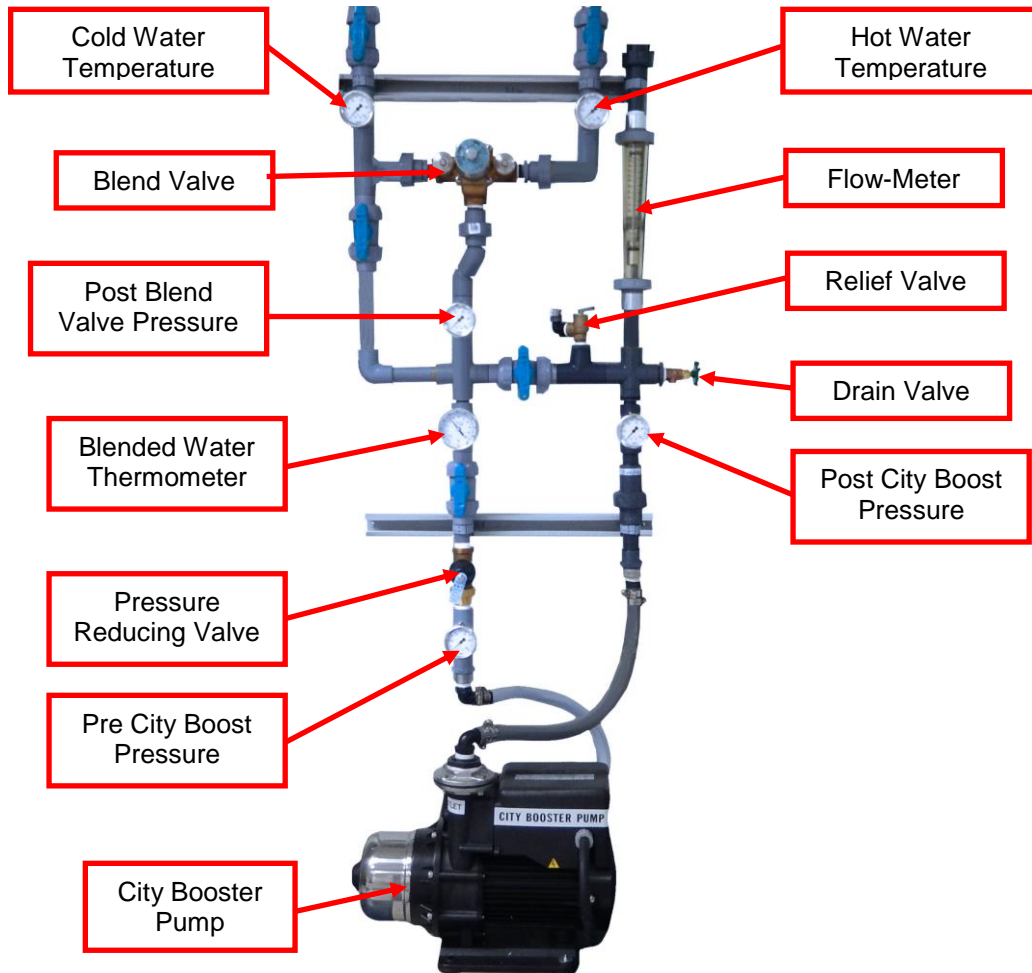
REA 2421



Wall-Mounted Pre-Treatment Rack, 1"

Models and Specifications

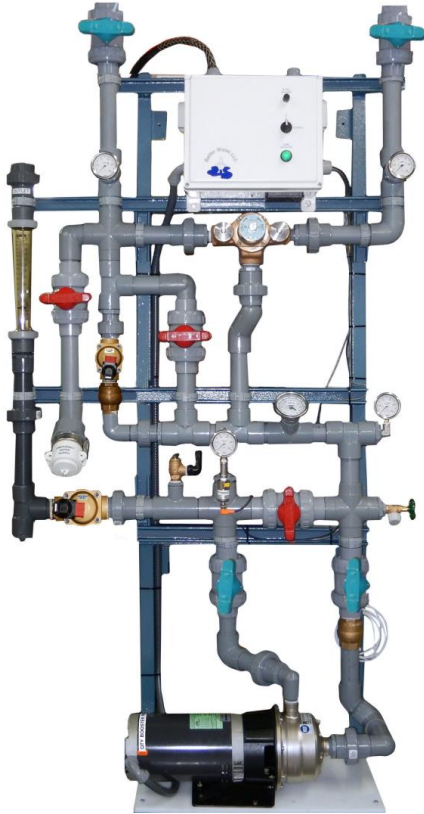
Models	WM-PRE-2101-CE	WM-PRE-4101-CE	WM-PRE-4103-CE
Power Requirements	115 vac, 1 phase, 60 Hz, 1 HP	230 vac, 1 phase, 60 Hz, 3 HP	208 vac, 1 phase, 60 Hz, 3 HP
Piping	1" CPVC		
Blend Valve with By-Pass	Symmons 7-400		
Gauges	Blended Water Temperature, Incoming Hot-Water Pressure, Incoming Cold Water Pressure, Post-Blend Valve Pressure, Pre-City Booster Pump, and Post-City Booster Pump Pressure.		
Dimensions	Rack on the Wall: Height 80" x Width 40" x Depth 15" Floor Space for City Booster Pump: Height 9" x Width 17" x Depth 9"		
Weight	Rack: 35 lbs. City Booster Pump: 25 lbs.		
Features	City Booster Pump, Flow-Meter 3-30 gpm,		





Better Water LLC

Standard Pre-Treatment Rack, 1" and 1 1/2"



- Better Water LLC has the solution to all your pre-treatment needs.
- Pre-treatment racks include a blend-valve, automatic blend-valve by-pass, VFD controlled city booster pump (1 and 3 phase), with all the necessary controls and safety features.
- The pre-treatment racks come assembled and ready for installation, greatly decreasing the time needed for the usual labor intensive installation of pre-treatment piping.
- Constructed of CPVC piping in 1" and 1 1/2" size, on a rugged stainless-steel, powder coated frame.

Standard Features

- CPVC Piping; 1" and 1 1/2"
- Stainless-Steel Powder-Coated Frame
- VFD Controlled City Booster Pump
- Blend Valve and Blend-Valve By-Pass
- Thermometer
- Full Set of Pressure Gauges
- Flow-Meter
- 2" Emergency Water Supply Connection
- Water Leak Detector Probe and Alarm

rev. Apr 2023



Better Water LLC; 698 Swan Dr; Smyrna, TN 37167; Phone (615) 355-6063, Fax (615) 355-6065
Website www.betterwater.com



*Equipment changes are at the sole discretion of Better Water LLC.
Brochure photographs and specifications may not reflect recent changes.*

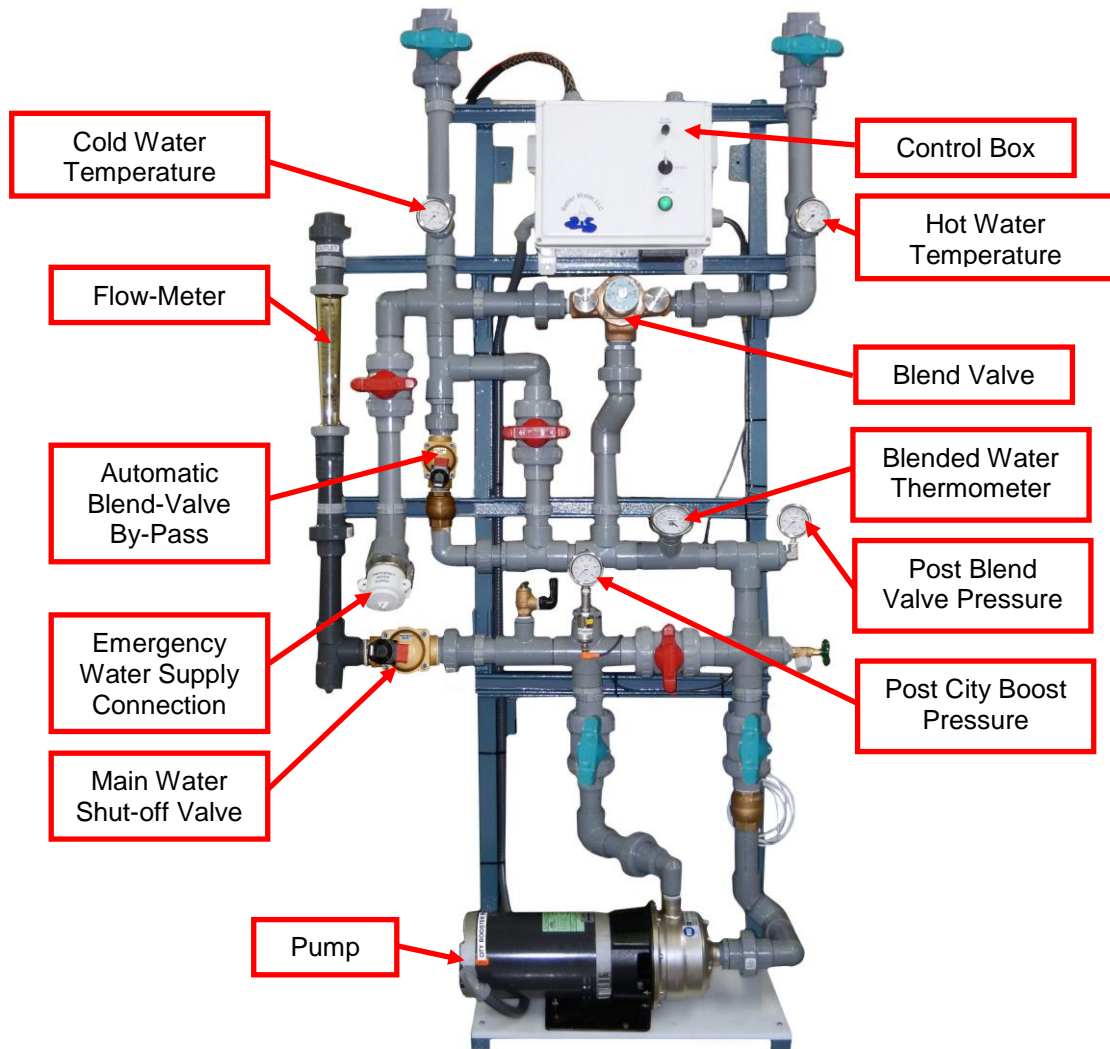
REA 2421



Standard Pre-Treatment Rack, 1" and 1 1/2"

Models and Specifications

Models	WM-PRE-4101-C	WM-PRE-4103-C	WM-PRE-5151-C	WM-PRE-5153-C
Piping	1 CPVC	1" CPVC	1 1/2" CPVC	1 1/2" CPVC
Power Requirements	1 phase, 230 vac, 60 Hz	3 phase, 208 vac, 60 Hz	1 phase, 230 vac, 60 Hz	3 phase, 208 vac, 60 Hz
Blend Valve with By-Pass	Symmons 7-400	Symmons 7-400	Symmons 7-500	Symmons 7-500
Gauges	Blended Water Temperature, Incoming Hot-Water Pressure, Incoming Cold Water Pressure, Post-Blend Valve Pressure, and Post-City Booster Pump Pressure.			
Dimensions	Floor Rack; Height 80" x Width 42" x Depth 17"			
Tempered Water Flow-Rate	Up to 27 gallons per minute		Up to 38 gallons per minute	
Features	VFD Controlled City Booster Pump 3HP, Flow-Meter 3-30 gpm, Water Leak Detector, Emergency Water Supply Connection, Automatic Blend Valve By-Pass			





Pre-Treatment Components

IRON FILTER

- Reduces Heavy Metals
- A tank containing media which reduces heavy metals such as iron, manganese, and hydrogen sulfide
- A variety of Tank and Fleck Valve sizes available
- Adjustable backwash times
- RO interlock



MULTI-MEDIA DEPTH FILTER

- Particulate/Sediment Filtration
- Contains a multi-layered media for sediment filtration when the feed water has a high silt density index
- Reduces particulates larger than 10 microns
- A variety of Tank and Fleck Valve sizes available
- Adjustable backwash times
- RO interlock



HURRICANE FILTER

- Particulate/Sediment Filtration
- Stainless-steel housing containing a pleated cartridge filter
- Filter Sizes:
 - .35 micron
 - 1 micron
 - 5 micron
 - 20 micron



BIG BLUE FILTER

- Particulate/Sediment Filtration
- Cartridge filter which reduces particulates larger than 5 microns although other size micron filters are available



rev. Apr 2023





Pre-Treatment Components

MULTI-CARTRIDGE HOUSING

- Particulate/Sediment Filtration
- Housing holds four cartridge filters to reduce particulates larger than 5 microns although other size micron filters are available



WATER SOFTENER

- Reduces Water Hardness
- A tank containing resin media which reduces heavy metals such as calcium and magnesium
- Works in conjunction with a brine tank
- A variety of Tank and Fleck Valve sizes available
- Adjustable regeneration times
- RO interlock



DEALKALIZER

- Lowers Water pH
- A tank containing resin media
- Works in conjunction with a brine tank
- A variety of Tank and Fleck Valve sizes available
- Adjustable regeneration times
- RO interlock



ORGANIC SCAVENGER

- Reduces Organic Material
- A tank containing resin media
- Works in conjunction with a brine tank
- A variety of Tank and Fleck Valve sizes available
- Adjustable regeneration times
- RO interlock





Pre-Treatment Components

CARBON FILTER

- Reduces Chlorine and Chloramines
- A tank containing carbon media
- Normally a 2 tanks, a worker and polisher
- A variety of Tank and Fleck Valve sizes available
- Adjustable backwash times
- RO interlock



ULTRA-VIOLET LIGHT (UV)

- Reduces Bacteria
- UV lamp housed inside a quartz sleeve which is inside a stainless-steel housing
- UV rays pass through the quartz sleeve into the water and alter the DNA of many waterborne bacteria to sterilize them, preventing them from reproducing
- Wall-Mounted



STANDARD ORDER of PRE-TREATMENT COMPONENTS (Pre-RO)

* Used in conjunction with one another and variable based on the make-up of the incoming water



- | | | |
|------------------------------|---|-----------------------------|
| 01. Pre-Treatment Rack | 06. Multi-Cartridge Housing | 11. Multi-Cartridge Housing |
| 02. Iron Filter | 07. Water Softener | 12. UV Light |
| 03. Multi-Media Depth Filter | 08. Dealkalizer | |
| 04. Hurricane Filter | 09. Organic Scavenger | |
| 05. Big Blue Filter | 10. Carbon Filter(s)[worker & polisher] | |

