



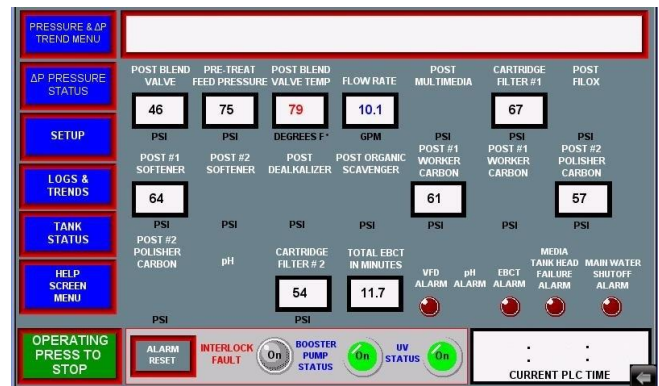
Matrix Pre-Treatment Rack



- Innovative touch-screen interface for operational displays, alarms, and set up.
- Pre-treatment racks include a blend-valve, automatic blend-valve by-pass, VFD controlled city booster pump (1 and 3 phase), with all the necessary controls and safety features.
- The pre-treatment racks come assembled and ready for installation, greatly decreasing the time needed for the usual labor intensive installation of pre-treatment piping.
- Constructed of CPVC piping in 1" or 1 1/2" size, on a rugged stainless-steel, powder coated frame.

Standard Features

- Touch-Screen Interface and Display
- CPVC Piping; 1" or 1 1/2"
- Stainless-Steel Powder-Coated Frame
- VFD Controlled City Booster Pump
- Blend Valve and Blend-Valve By-Pass
- Digital Flow-Meter
- 2" Emergency Water Supply Connection
- Water Leak Detector Probe and Alarm





Matrix Pre-Treatment Racks

Models and Specifications

| Models | WM-PRE-4101-CM | WM-PRE-4103-CM | WM-PRE-5151-CM | WM-PRE-5153-CM |
|----------------------------|---|-------------------------|-----------------------------|-------------------------|
| Piping | 1" CPVC | 1" CPVC | 1 1/2" CPVC | 1 1/2" CPVC |
| Power Requirements | 1 phase, 230 vac, 60 Hz | 3 phase, 208 vac, 60 Hz | 1 phase, 230 vac, 60 Hz | 3 phase, 208 vac, 60 Hz |
| Blend Valve | Symmons 7-400 | Symmons 7-400 | Symmons 7-500 | Symmons 7-500 |
| Blend Valve By-Pass | Yes | Yes | Yes | Yes |
| Variable Speed | Yes | Yes | Yes | Yes |
| Incoming Water Connections | 1" hot and cold unions | | 1 1/2" hot and cold unions | |
| Gauges | Incoming Hot Water, and Cold Water | | | |
| Dimensions | Height 80" x Width 42" x Depth 17" | | | |
| Weight | 220 lbs | | 225 lbs | |
| Tempered Water Flow-Rate | Up to 27 gallons per minute | | Up to 38 gallons per minute | |
| Features | Touch-Screen Interface and Display, City Booster Pump 3HP, Digital Flow-Meter, Water Leak Detector, Emergency Water Supply Connection | | | |

